

Design Count: 147w X 29h stitches

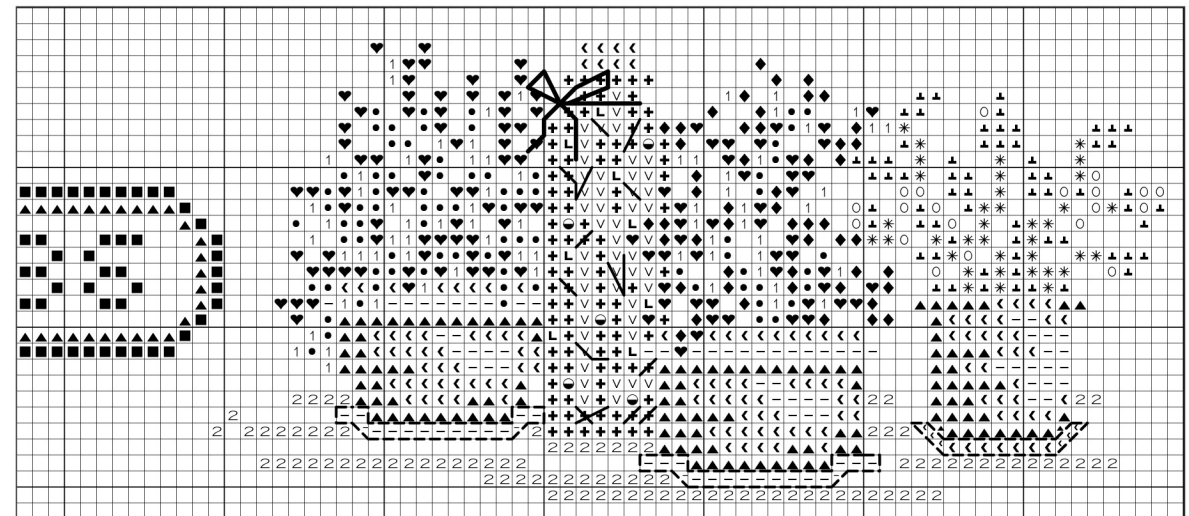
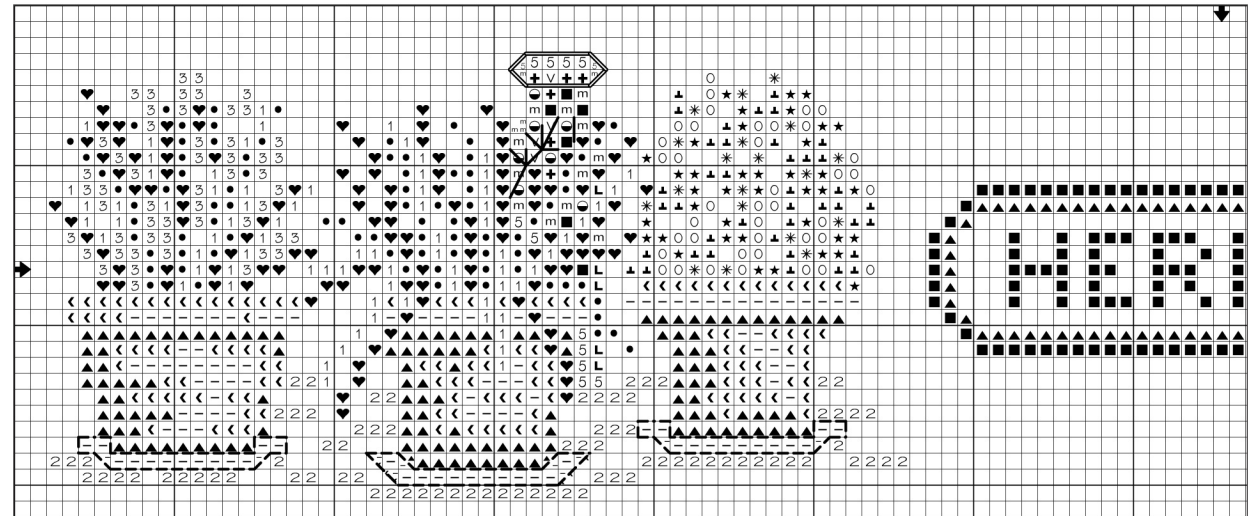
14 Count - 10-1/2"w X 2"h

Cross stitch – two ply

- | DMC | COLOR |
|--------|-----------------------|
| * 319 | Pistachio Green-VY DK |
| ⬇ 320 | Pistachio Green-MD |
| ▲ 355 | Terra Cotta-DK |
| ◀ 356 | Terra Cotta-MD |
| ○ 368 | Pistachio Green-LT |
| — 758 | Terra Cotta-VY LT |
| 2 762 | Pearl Gray-VY LT |
| ★ 783 | Topaz-MD |
| 5 830 | Golden Olive-DK |
| L 832 | Golden Olive |
| m 833 | Golden Olive-LT |
| ⊕ 834 | Golden Olive-VY LT |
| ■ 839 | Beige Brown-DK |
| ● 3345 | Hunter Green-DK |
| ♥ 3347 | Yellow Green-MD |
| 1 3348 | Yellow Green-LT |
| ◆ 3608 | Plum-VY LT |
| ∨ 3822 | Straw-LT |
| ⊙ 3831 | Raspberry-DK |
| 3 3839 | Lavender Blue-MD |

Back stitch – one ply

- | | | |
|-----|------|-----------------------------------|
| --- | 356 | Terra Cotta-MD |
| — | 830 | Golden Olive-DK |
| — | 3345 | Hunter Green-DK – herbs in bottle |
| — | 3608 | Plum-VY LT – ribbon on bottle |



The Janlynn Corporation allows a photocopy / enlargement of this chart for personal use. Selling or distributing copies of this chart is strictly prohibited.

The Janlynn Corporation
2070 Westover Road, Chicopee, MA 01022 USA
800-445-5565 (USA & Canada) ~ 413-206-0002 (International)
www.janlynn.com Email:customerserv@janlynn.com